



ABOUT THE DEVELOPER

K2 Construction and Developers was founded in the year 2018 by Engineer Joseph Rego with an aim to build homes that set benchmarks in the real estate sector.

Our vision has always been to provide contemporary living at value for money.

And keeping this at the core of our business, our projects are built keeping you and your lifestyle in mind. Because we believe homes are more than just that. They are an extension of our personality and your aspirations.

With state-of-the-art design plans and technological superiority in our construction approach, every project bears our signature touch.

Keziah and Kish Rego
K2 Construction & Developers

OFFICE:

No 201, Second floor,
Edcon Galleria,
Opp. Sunshine Bldg.
Panaji - Goa 403001.

Call: +91 9822487293 | +91 7972144767

Email: sales@k2goa.com

Web: www.k2goa.com

RERA No.: PRGO08211405

This Brochure is Purely Conceptual and does not form a legal or contractual offering. All Images are illustrative and Artist's Impressions. Room dimensions are in meters. All Materials, Dimensions & Drawings are appropriate. Drawings are not to scale. Information subject to changes without notice. The developer reserves the right to make revisions.



REGO'S HERITAGE

A PROJECT BY



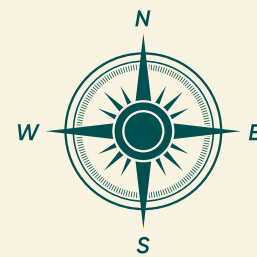
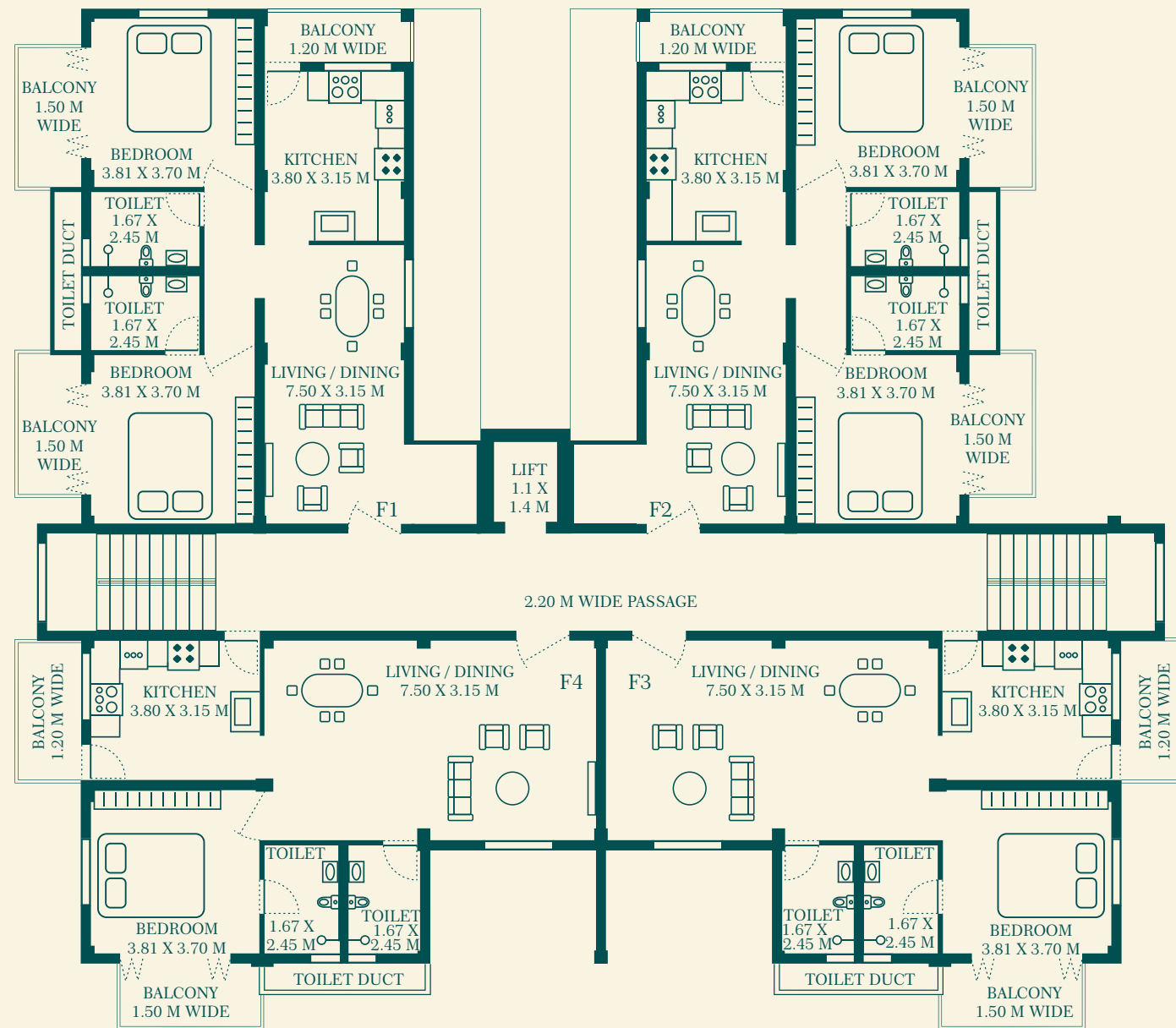
More SPACE For You To Do MORE

Today, the importance of fine living is synonymous with homes that offer you not just the best of amenities, but also an expansive living space. And at Rego's Heritage, we believe in the principle of offering you the best of spacious living at the most affordable cost. So that not just your home, even your lifestyle is XXL.



REGO'S
HERITAGE

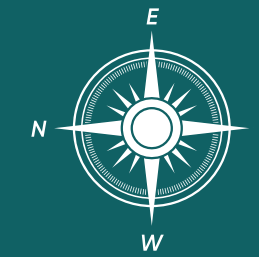
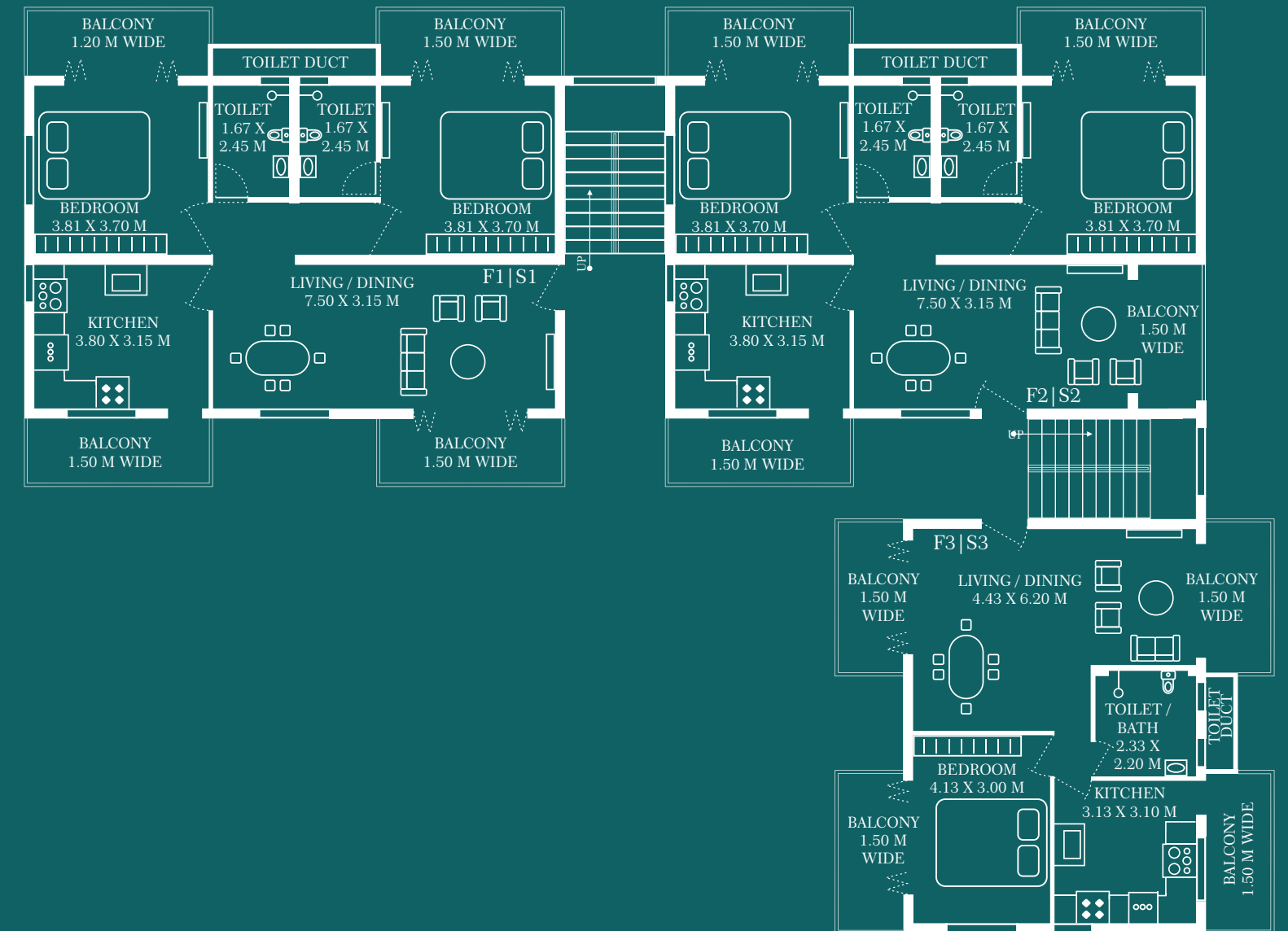
BLOCK A



Area Statement

FLAT NO.	TYPE
A-F1	2 BHK
A-F2	2 BHK
A-F3	1 BHK
A-F4	1 BHK
A-S1	2 BHK
A-S2	2 BHK
A-S3	1 BHK
A-S3	1 BHK

BLOCK B



Area Statement

FLAT NO.	TYPE
B-F1	2 BHK
B-F2	2 BHK
B-F3	1 BHK
B-S1	2 BHK
B-S2	2 BHK
B-S3	1 BHK



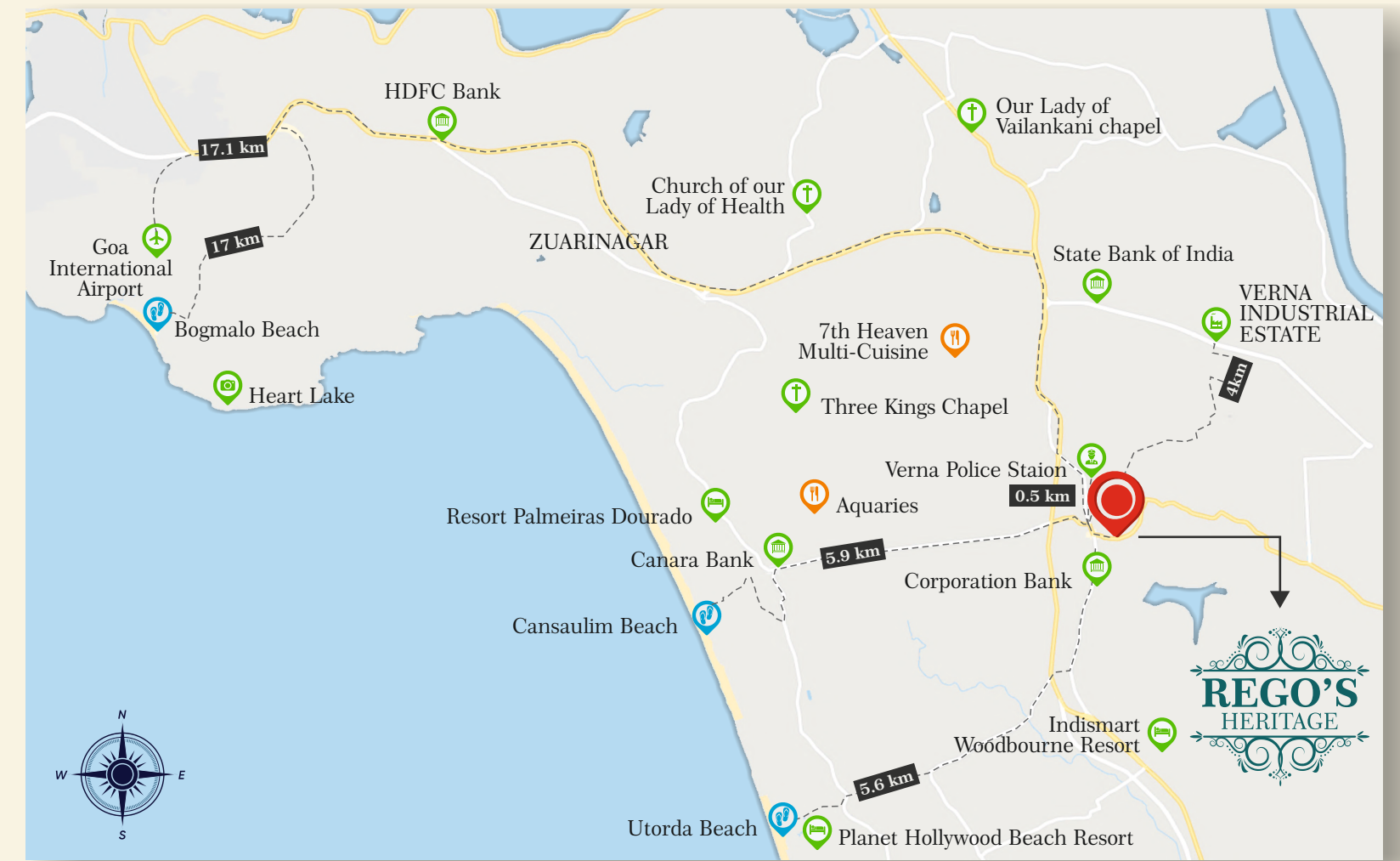
SPECIFICATION

- 1 Spacious homes, bigger halls and expansive bedrooms
- 2 Cross-ventilated apartments
- 3 Balconies in every bedroom and kitchen
- 4 Open Terraces (A-101 & A-102)
- 5 Lift in Block A
- 6 Choice of Independent Apartments

- Flooring**
Vitrified Tiles (Premium Brand)
- Sanitary**
Cera Fittings
- Kitchen**
Granite Counter
- Doors**
Main Door - Teak Wood
Bathroom - FRP with Granite Frame
Bedroom - Flush Doors
Balcony - Aluminium French Doors
- Windows**
Aluminium Sliding
- Electrical**
Legrand Fitting
- Painting**
Premium Brand
- Fire**
Fire Extinguisher



LOCATION MAP



Not Just **SPACIOUS**, But Also **CONNECTED LIVING**

SITE PLAN

